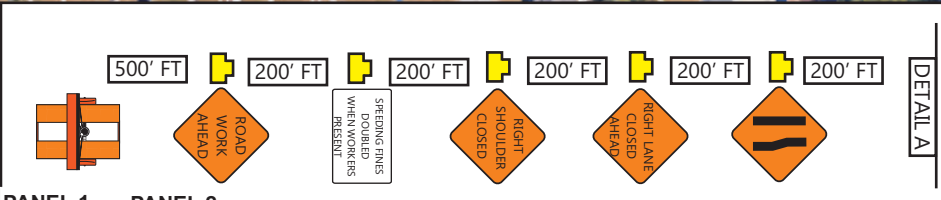


VARIABLE MESSAGE BOARDS
LABELED (A) TO DISPLAY THE
FOLLOWING MESSAGE 14 DAYS
PRIOR TO WORK COMMENCEMENT:

PANEL 1	PANEL 2
NEW TRAFFIC PATTERN	BEGINS MM/DD/YY

REFER TO FDOT INDEX
NUMBER 102-620

SPEED LIMIT ON
FLORIDA AVE S IS 40 MPH



LEGEND

- = WORK AREA
- = CHANNELIZING DEVICE
- = ARROW PANEL
- = LANE IDENTIFICATION
- = VARIABLE MESSAGE BOARD

TEMPORARY SIGN SUPPORT NOTES:

1. All signs shall be post mounted when work operations exceed one day except for:
 - a. Road closure signs mounted in accordance with the vendor drawing for the Type III Barricade shown on the APL.
 - b. Pedestrian advanced warning or pedestrian regulatory signs mounted on sign supports in accordance with the vendor drawing shown on the APL.
 - c. Median barrier mounted signs per Index 700-013.

MOT provided by:
Bob's BARRICADES, INC.
COMPLETE WORKSITE TRAFFIC CONTROL

PLAN NOT TO SCALE

FDOT This Certifies that
CAMERON BERGER
Has Completed a Florida Department of Transportation Approved
Temporary Traffic Control (TTC) Advanced (Refresher) Course.
Date Expires: 08/20/2025 Certificate # 76723
Instructor: Ronald C. Appel FDOT Provider # 134

A&SW Consultants, Inc.
Phone: 386-788-9899
5545 Benchmark Lane
Sanford & nbsp;, FL 32773
www.FloridaMOT.com
nicolle@aswconsultants.com



TEMPORARY TRAFFIC CONTROL SHALL COMPLY WITH THE CURRENT EDITION OF THE FDOT DESIGN STANDARDS (102-600 SERIES INDEX NUMBERS) AND MANUAL ON UNIFORM TRAFFIC CONTROL DEVICES (MUTCD).