

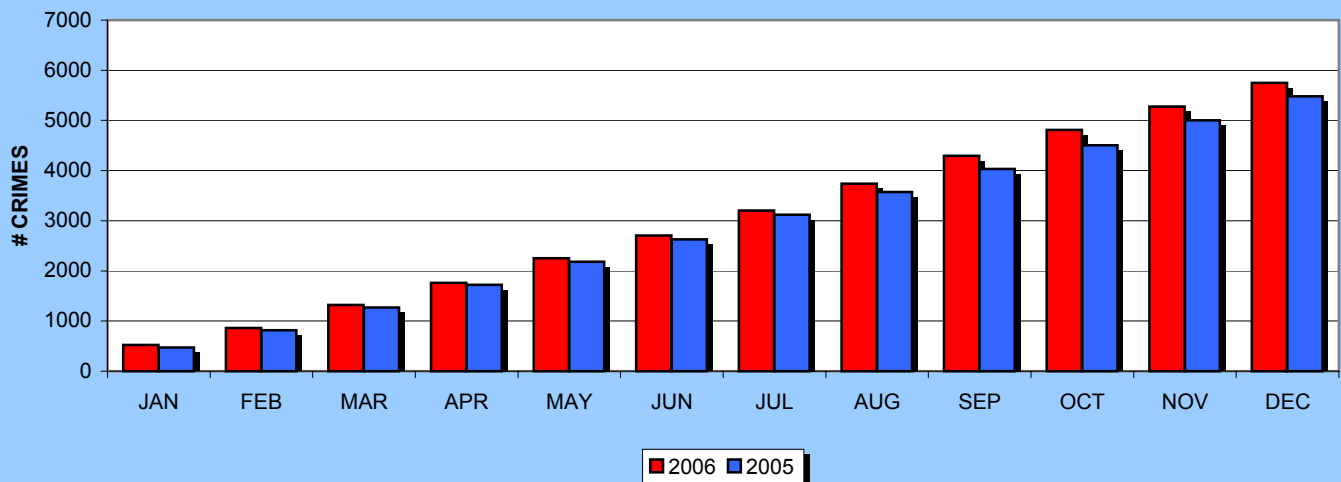


LAKELAND POLICE DEPARTMENT 2006 UNIFORM CRIME REPORT

DECEMBER 2006

		JAN	FEB	MAR	APR	MAY	JUN	JUL	AUG	SEP	OCT	NOV	DEC	YTD	ANNUAL	% CHNG
Murder	2006	1	1	0	0	0	0	0	0	1	0	0	0	3	3	
	2005	0	2	1	0	0	0	1	0	2	0	0	0	6	6	-50%
	2004	0	0	0	1	1	0	0	0	0	1	0	0	3	3	0%
Forcible Sex	2006	17	5	10	8	15	10	10	8	7	12	12	6	120	120	
	2005	5	4	5	2	3	7	8	6	7	3	5	6	61	61	97%
	2004	4	7	6	3	2	6	2	6	6	11	4	6	63	63	90%
Robbery	2006	14	9	20	14	15	7	15	25	16	20	14	33	202	202	
	2005	11	6	13	9	12	10	11	12	7	14	19	16	140	140	44%
	2004	32	13	11	16	15	11	9	12	17	8	10	8	162	162	25%
Agg. Assault	2006	25	28	22	25	28	23	14	15	30	23	15	20	268	268	
	2005	22	16	10	16	26	25	20	33	21	11	14	16	230	230	17%
	2004	13	14	12	18	14	12	21	18	16	23	11	17	189	189	42%
Violent Crimes	2006	57	43	52	47	58	40	39	48	54	55	41	59	593	593	
	2005	38	28	29	27	41	42	40	51	37	28	38	38	437	437	36%
	2004	49	34	29	38	32	29	32	36	39	43	25	31	417	417	42%
Burglary	2006	101	42	65	74	111	116	135	150	98	96	75	77	1140	1140	
	2005	76	44	76	73	68	77	75	78	77	76	91	101	912	912	25%
	2004	80	71	75	119	103	91	99	83	94	106	83	80	1084	1084	5%
Larceny	2006	349	233	311	291	287	258	290	319	359	332	329	308	3666	3666	
	2005	335	242	297	315	323	301	352	300	297	332	345	316	3755	3755	-2%
	2004	278	294	299	358	340	295	370	321	263	294	352	310	3774	3774	-3%
Auto Theft	2006	18	20	30	30	32	42	31	23	41	34	21	30	352	352	
	2005	22	33	47	43	25	30	22	25	48	36	22	25	378	378	-7%
	2004	32	25	20	28	25	22	34	43	33	16	23	27	328	328	7%
Property Crimes	2006	468	295	406	395	430	416	456	492	498	462	425	415	5158	5158	
	2005	433	319	420	431	416	408	449	403	422	444	458	442	5045	5045	2%
	2004	390	390	394	505	468	408	503	447	390	416	458	417	5186	5186	-1%
Index Total	2006	525	338	458	442	488	456	495	540	552	517	466	474	5751	5751	
	2005	471	347	449	458	457	450	489	454	459	472	496	480	5482	5482	5%
	2004	439	424	423	543	500	437	535	483	429	459	483	448	5603	5603	3%

2006 UCR INDEX CRIME
CUMULATIVE TREND



Prepared by: CO/NSB

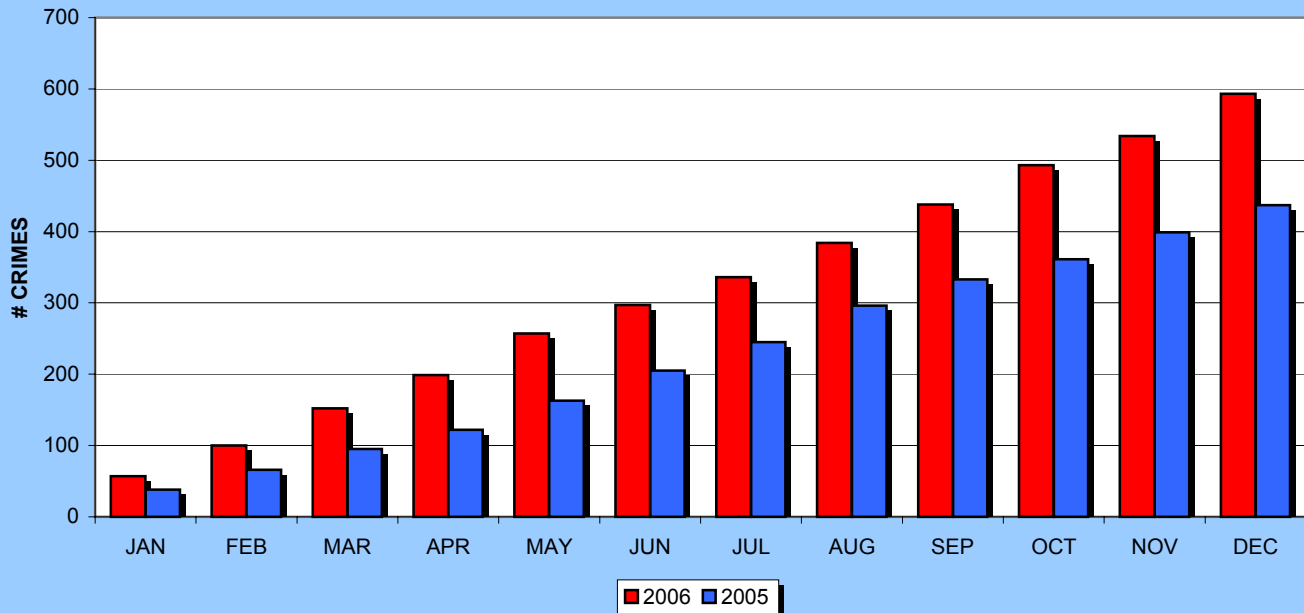
UCR data for 2006 are preliminary, pending semi-annual audits and completion of the 2006 UCR report. Figures may change.



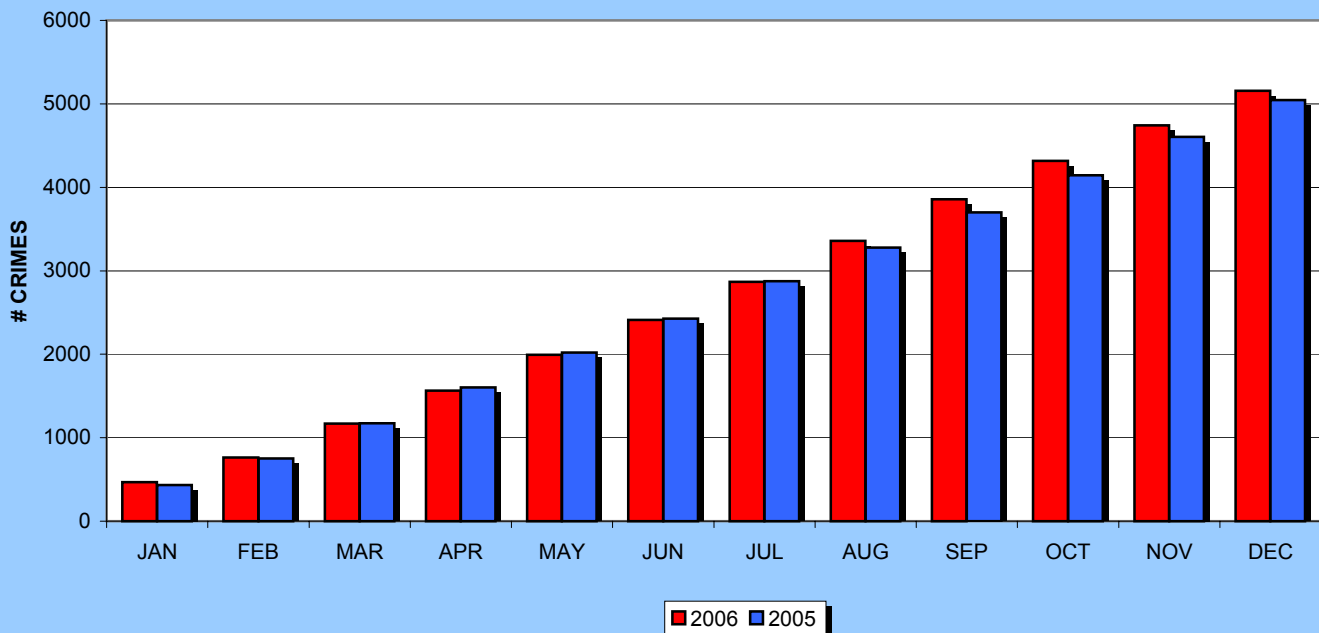
LAKELAND POLICE DEPARTMENT 2006 UNIFORM CRIME REPORT

DECEMBER 2006

VIOLENT CRIMES CUMULATIVE TREND



PROPERTY CRIMES CUMULATIVE TREND



Prepared by: CO/NSB

UCR data for 2006 are preliminary, pending semi-annual audits and completion of the 2006 UCR report. Figures may change.