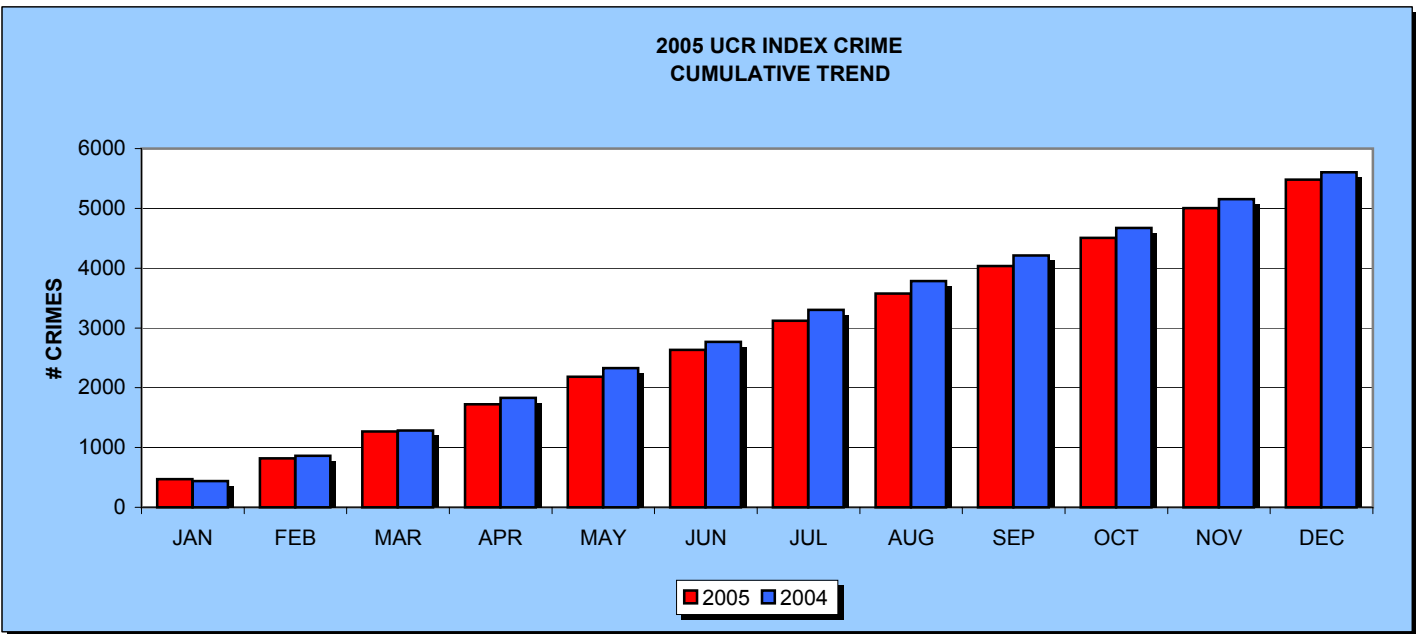




LAKELAND POLICE DEPARTMENT 2005 UNIFORM CRIME REPORT

DECEMBER 2005

		JAN	FEB	MAR	APR	MAY	JUN	JUL	AUG	SEP	OCT	NOV	DEC	YTD	ANNUAL	% CHNG
Murder	2005	0	2	1	0	0	0	1	0	2	0	0	0	6	6	
	2004	0	0	0	1	1	0	0	0	0	1	0	0	3	3	100%
	2003	0	0	1	2	0	0	1	1	0	0	0	0	5	5	20%
Forcible Sex	2005	5	4	5	2	3	7	8	6	7	3	5	6	61	61	
	2004	4	7	6	3	2	6	2	6	6	11	4	6	63	63	-3%
	2003	10	7	9	11	7	5	2	6	4	4	7	7	79	79	-23%
Robbery	2005	11	6	13	9	12	10	11	12	7	14	19	16	140	140	
	2004	32	13	11	16	15	11	9	12	17	8	10	8	162	162	-14%
	2003	15	10	18	12	19	17	23	18	22	13	27	21	215	215	-35%
Agg. Assault	2005	22	16	10	16	26	25	20	33	21	11	14	16	230	230	
	2004	13	14	12	18	14	12	21	18	16	23	11	17	189	189	22%
	2003	17	11	19	31	23	14	19	20	20	17	14	12	217	217	6%
Violent Crimes	2005	38	28	29	27	41	42	40	51	37	28	38	38	437	437	
	2004	49	34	29	38	32	29	32	36	39	43	25	31	417	417	5%
	2003	42	28	47	56	49	36	45	45	46	34	48	40	516	516	-15%
Burglary	2005	76	44	76	73	68	77	75	78	77	76	91	101	912	912	
	2004	80	71	75	119	103	91	99	83	94	106	83	80	1084	1084	-16%
	2003	73	76	88	80	75	76	84	76	95	55	79	96	953	953	-4%
Larceny	2005	335	242	297	315	323	301	352	300	297	332	345	316	3755	3755	
	2004	278	294	299	358	340	295	370	321	263	294	352	310	3774	3774	-1%
	2003	322	282	303	356	337	311	362	346	308	287	273	358	3845	3845	-2%
Auto Theft	2005	22	33	47	43	25	30	22	25	48	36	22	25	378	378	
	2004	32	25	20	28	25	22	34	43	33	16	23	27	328	328	15%
	2003	31	33	35	33	34	37	34	22	19	30	32	37	377	377	0%
Property Crimes	2005	433	319	420	431	416	408	449	403	422	444	458	442	5045	5045	
	2004	390	390	394	505	468	408	503	447	390	416	458	417	5186	5186	-3%
	2003	426	391	426	469	446	424	480	444	422	372	384	491	5175	5175	-3%
Index Total	2005	471	347	449	458	457	450	489	454	459	472	496	480	5482	5482	
	2004	439	424	423	543	500	437	535	483	429	459	483	448	5603	5603	-2%
	2003	468	424	423	543	500	437	535	483	429	459	483	448	5632	5632	-3%



Prepared by: CO/ISB

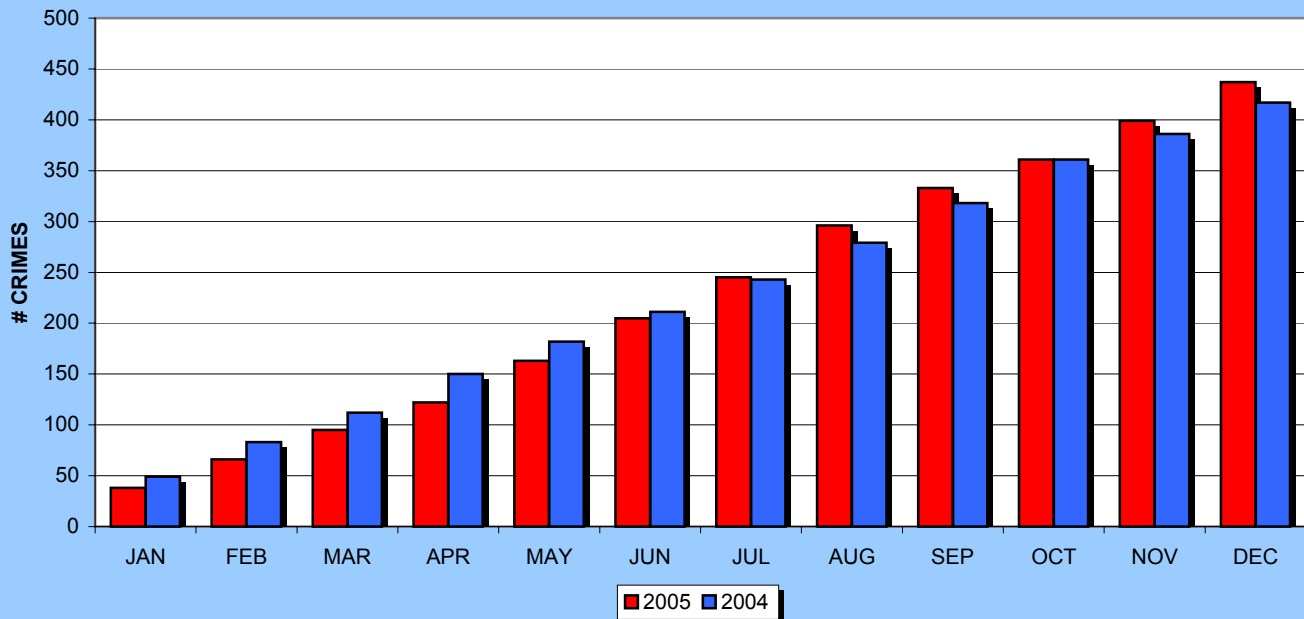
UCR data for 2005 is preliminary, pending semi-annual audits and completion of the 2005 UCR report. Figures may change.



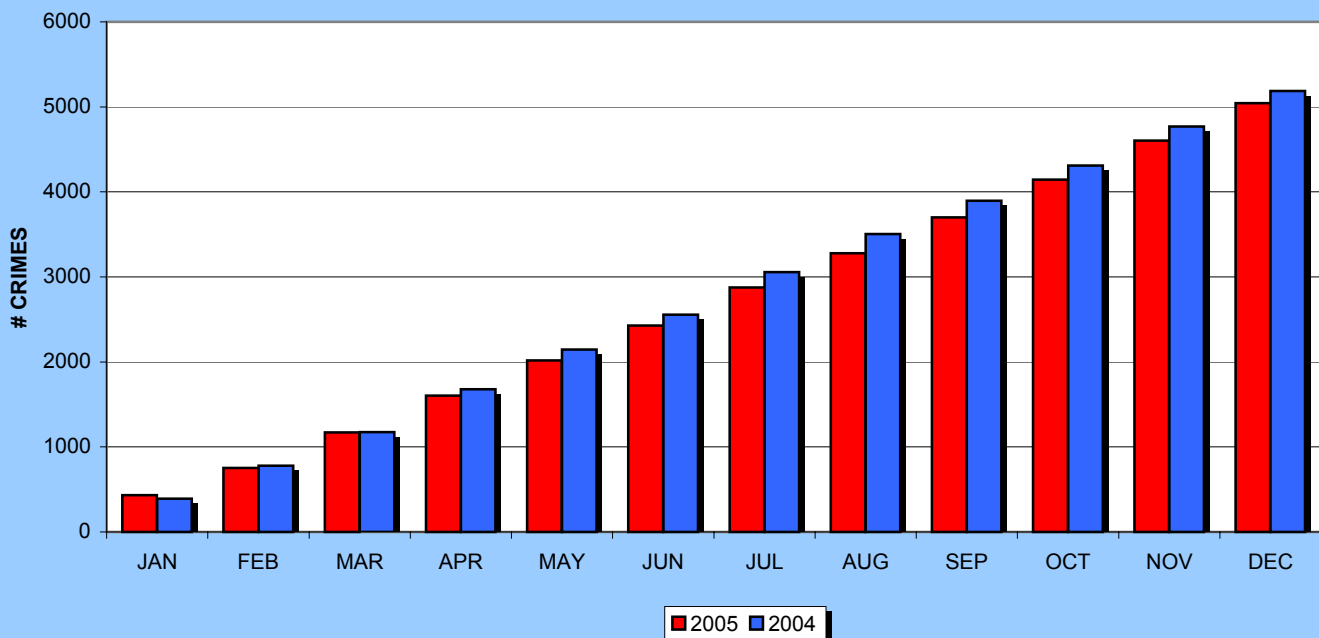
LAKELAND POLICE DEPARTMENT 2005 UNIFORM CRIME REPORT

DECEMBER 2005

VIOLENT CRIMES CUMULATIVE TREND



PROPERTY CRIMES CUMULATIVE TREND



Prepared by: CO/ISB

UCR data for 2005 is preliminary, pending semi-annual audits and completion of the 2005 UCR report. Figures may change.