

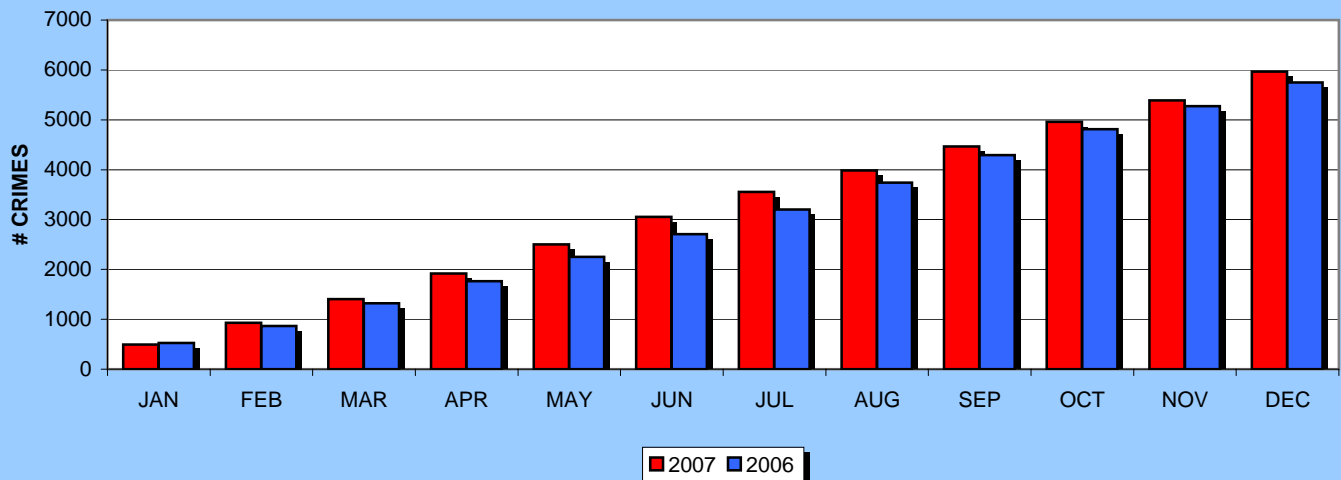


LAKELAND POLICE DEPARTMENT 2007 UNIFORM CRIME REPORT

DECEMBER 2007

		JAN	FEB	MAR	APR	MAY	JUN	JUL	AUG	SEP	OCT	NOV	DEC	YTD	ANNUAL	% CHNG
Murder	2007	0	0	0	0	0	1	1	0	2	0	1	1	6	6	
	2006	1	1	0	0	0	0	0	0	1	0	0	0	3	3	100%
	2005	0	2	1	0	0	0	1	0	2	0	0	0	6	6	0%
Forcible Sex	2007	9	6	7	9	7	4	8	3	5	13	4	6	81	81	
	2006	17	5	10	8	15	10	10	8	7	12	12	6	120	120	-32.5%
	2005	5	4	5	2	3	7	8	6	7	3	5	6	61	61	32.8%
Robbery	2007	15	24	20	13	26	25	20	9	17	10	12	10	201	201	
	2006	14	9	20	14	15	7	15	25	16	20	14	33	202	202	-0.5%
	2005	11	6	13	9	12	10	11	12	7	14	19	16	140	140	43.6%
Agg. Assault	2007	18	24	22	28	36	40	27	11	24	26	20	30	306	306	
	2006	25	28	22	25	28	23	14	15	30	23	15	20	268	268	14.2%
	2005	22	16	10	16	26	25	20	33	21	11	14	16	230	230	33.0%
Violent Crimes	2007	42	54	49	50	69	70	56	23	48	49	37	47	594	594	
	2006	57	43	52	47	58	40	39	48	54	55	41	59	593	593	0.2%
	2005	38	28	29	27	41	42	40	51	37	28	38	38	437	437	35.9%
Burglary	2007	98	58	59	96	102	101	113	87	98	89	80	112	1093	1093	
	2006	101	42	65	74	111	116	135	150	98	96	75	77	1140	1140	-4.1%
	2005	76	44	76	73	68	77	75	78	77	76	91	101	912	912	19.8%
Larceny	2007	317	303	354	340	388	356	310	298	309	319	280	382	3956	3956	
	2006	349	233	311	291	287	258	290	319	359	332	329	308	3666	3666	7.9%
	2005	335	242	297	315	323	301	352	300	297	332	345	316	3755	3755	5.4%
Auto Theft	2007	40	17	14	29	24	24	21	22	26	37	34	35	323	323	
	2006	18	20	30	30	32	42	31	23	41	34	21	30	352	352	-8.2%
	2005	22	33	47	43	25	30	22	25	48	36	22	25	378	378	-14.6%
Property Crimes	2007	455	378	427	465	514	481	444	407	433	445	394	529	5372	5372	
	2006	468	295	406	395	430	416	456	492	498	462	425	415	5158	5158	4.1%
	2005	433	319	420	431	416	408	449	403	422	444	458	442	5045	5045	6.5%
Index Total	2007	497	432	476	515	583	551	500	430	481	494	431	576	5966	5966	
	2006	525	338	458	442	488	456	495	540	552	517	466	474	5751	5751	3.7%
	2005	471	347	449	458	457	450	489	454	459	472	496	480	5482	5482	8.8%

2007 UCR INDEX CRIME
CUMULATIVE TREND

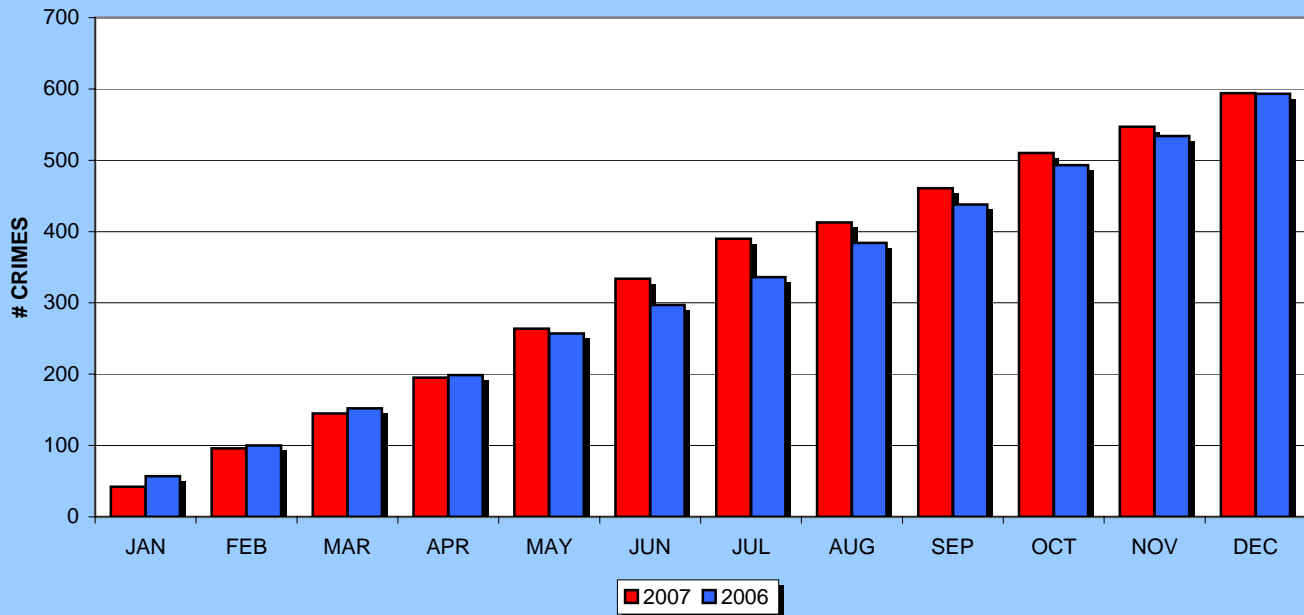




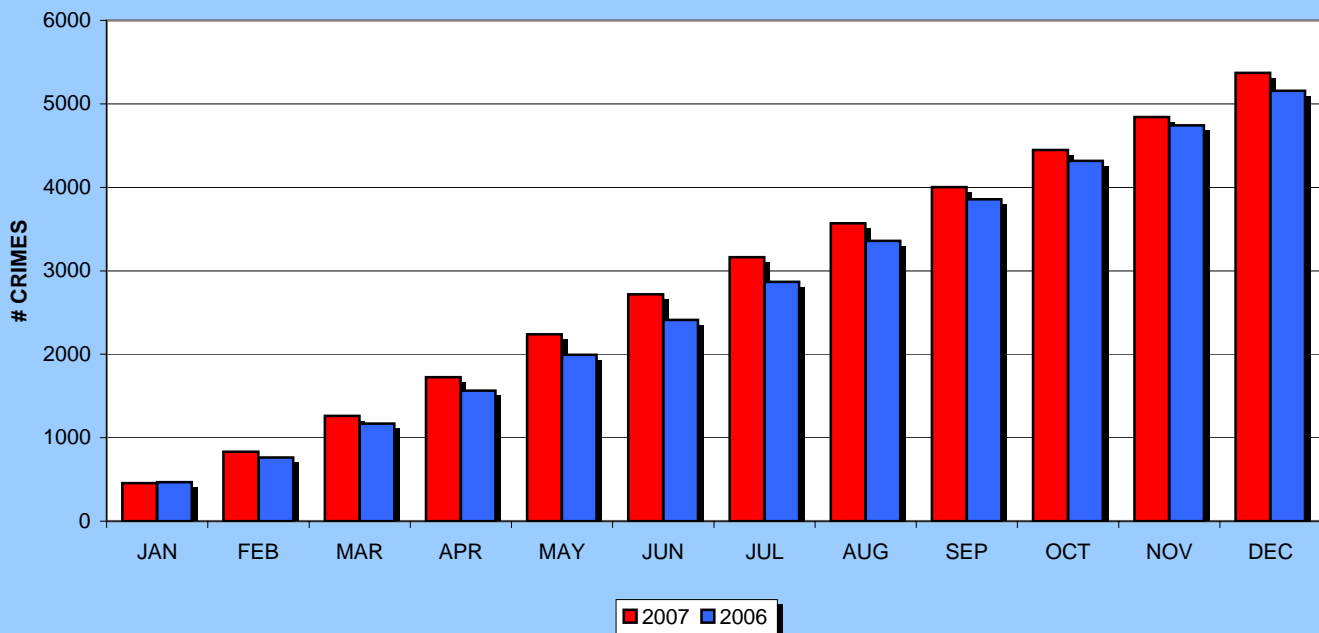
LAKELAND POLICE DEPARTMENT 2007 UNIFORM CRIME REPORT

DECEMBER 2007

VIOLENT CRIMES CUMULATIVE TREND



PROPERTY CRIMES CUMULATIVE TREND



2007 LAKE LAND PD UCR vs. GROUP III UCR CLEARANCE RATES

VIOLENT CRIMES	TOTAL	ARREST	EXCLEAR	TOTAL CLR	TOTAL RATE	GROUP III
Criminal Homicide	6	5	1	6		
Manslaughter	1	1	0	1		
TOTAL MURDER	7	6	1	7	100.0	63.8
Forcible Rape, Committed	39	3	4	7		
Forcible Rape, Attempted	0	0	0	0		
Forcible Sodomy	12	1	1	2		
Forcible Fondling	30	0	2	2		
TOTAL SEX OFFENSES	81	4	7	11	13.6	37.0
Robbery, Highway	138	17	3	20		
Robbery, Comm. Other	24	5	0	5		
Robbery, Gas/Svc Station	0	0	0	0		
Robbery, Convenience	5	0	1	1		
Robbery, Residence	19	5	1	6		
Robbery, Bank	2	1	0	1		
Robbery, Miscellaneous	13	1	3	4		
TOTAL ROBBERY	201	29	8	37	18.4	27.8
Aggravated Assault	307	85	48	133		
Aggravated Stalking	5	3	2	5		
TOTAL AGG ASSAULT	312	88	50	138	44.2	54.7
TOTAL VIOLENT	601	127	66	193	32.1	40.8
<hr/>						
PROPERTY CRIMES	TOTAL	ARREST	EXCLEAR	TOTAL CLR	TOTAL RATE	GROUP III
Burglary, Forcible Entry	617	29	12	41		
Burglary, Unlawful Entry	386	17	6	23		
Burglary, Attempted	90	2	0	2		
TOTAL BURGLARY	1093	48	18	66	6.0	12.8
Burglary, Residence	609	20	13	33	5.4	
<i>Night</i>	145	7	5	12		
<i>Day</i>	213	8	6	14		
<i>Unknown</i>	251	5	2	7		
Burglary, Non-Residence	484	28	5	33	6.8	
<i>Night</i>	127	6	0	6		
<i>Day</i>	121	11	2	13		
<i>Unknown</i>	236	11	3	14		
Larceny, Pocket-Picking	13	1	2	3		
Purse Snatching	25	3	0	3		
Shoplifting	910	724	29	753		
From Motor Vehicle	921	25	7	32		
Motor Vehicle Parts	37	0	0	0		
Bicycles	116	6	1	7		
From Building	165	26	11	37		
From Coin Oper Device	15	0	0	0		
All Other Larceny	1754	107	94	201		
TOTAL LARCENY	3956	892	144	1036	26.2	19.6
Motor Veh Theft, Auto	158	22	7	29		
Trucks & Buses	121	8	2	10		
Motorcycles	32	4	0	4		
Other Vehicles	12	0	0	0		
TOTAL MV THEFT	323	34	9	43	13.3	11.8
TOTAL PROPERTY	5372	974	171	1145	21.3	17.3

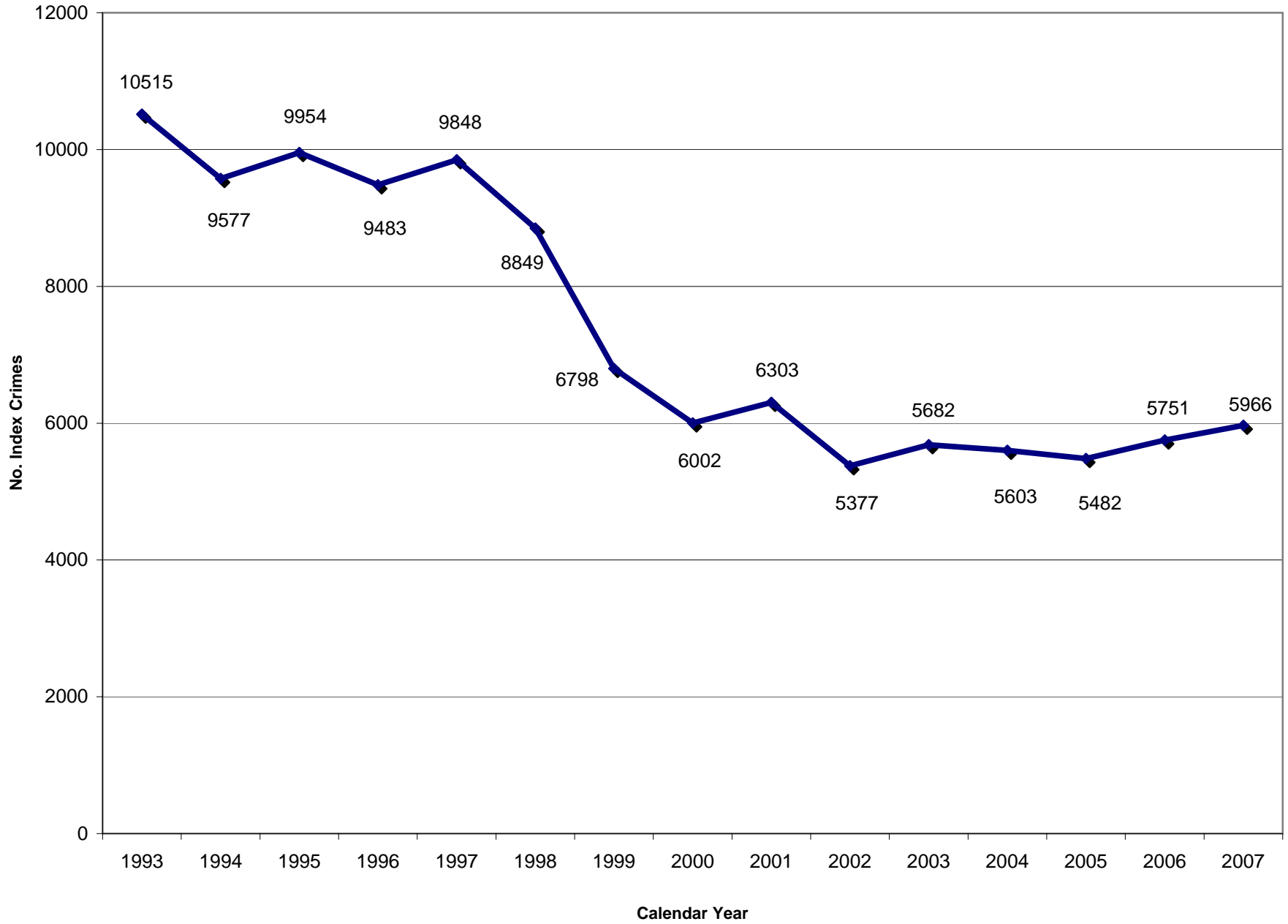
2005 - 2007 UCR CRIME RATIOS/POPULATION

	TOTAL UCR CRIMES				VIOLENT CRIMES				PROPERTY CRIMES		
	2005	2006	2007		2005	2006	2007		2005	2006	2007
JAN	471	525	497	JAN	38	57	42	JAN	433	468	455
FEB	347	338	432	FEB	28	43	54	FEB	319	295	378
MAR	448	458	476	MAR	29	52	49	MAR	420	406	427
APR	458	442	515	APR	27	47	50	APR	431	395	465
MAY	457	488	583	MAY	41	58	69	MAY	416	430	514
JUN	450	456	551	JUN	42	40	70	JUN	408	416	481
JUL	488	495	500	JUL	40	39	56	JUL	449	456	444
AUG	454	540	430	AUG	51	48	23	AUG	403	492	407
SEP	459	553	481	SEP	37	54	48	SEP	422	498	433
OCT	472	517	494	OCT	28	55	49	OCT	444	462	445
NOV	497	459	431	NOV	38	41	37	NOV	458	425	394
DEC	480	475	576	DEC	38	59	47	DEC	442	415	529
	5481	5746	5966		437	593	594		5045	5158	5372
Pct Change from prev year		4.8%	3.8%			35.7%	0.2%			2.2%	4.1%

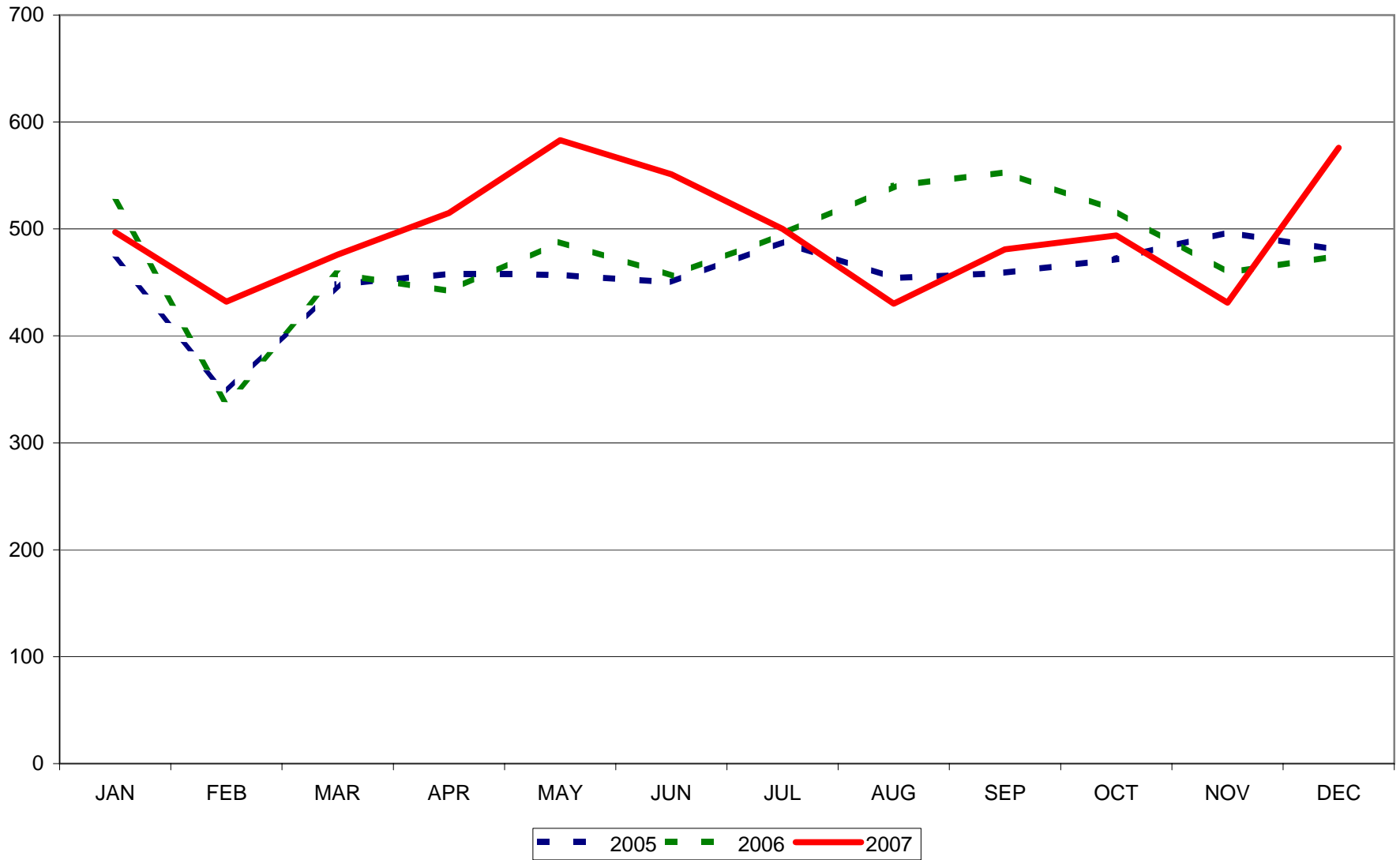
Crime Rate as Ratio Adjusted for Population Increase

	2005	2006	2007		2005	2006	2007		2005	2006	2007
	90,851	91,623	93,428		90,851	91,623	93,428		90,851	91,623	93,428
Population	90,851	91,623	93,428		90,851	91,623	93,428		90,851	91,623	93,428
Per 100	6.03	6.27	6.39		0.48	0.65	0.64		5.55	5.63	5.75
Per 1,000	60.33	62.71	63.86		4.81	6.47	6.36		55.53	56.30	57.50
Per 10,000	603.30	627.14	638.57		48.10	64.72	63.58		555.30	562.96	574.99
Per 100,000	6032.96	6271.35	6385.67		481.01	647.22	635.78		5553.05	5629.59	5749.88
Pct Change from prev year		4.0%	1.8%			34.6%	-1.8%			1.4%	2.1%

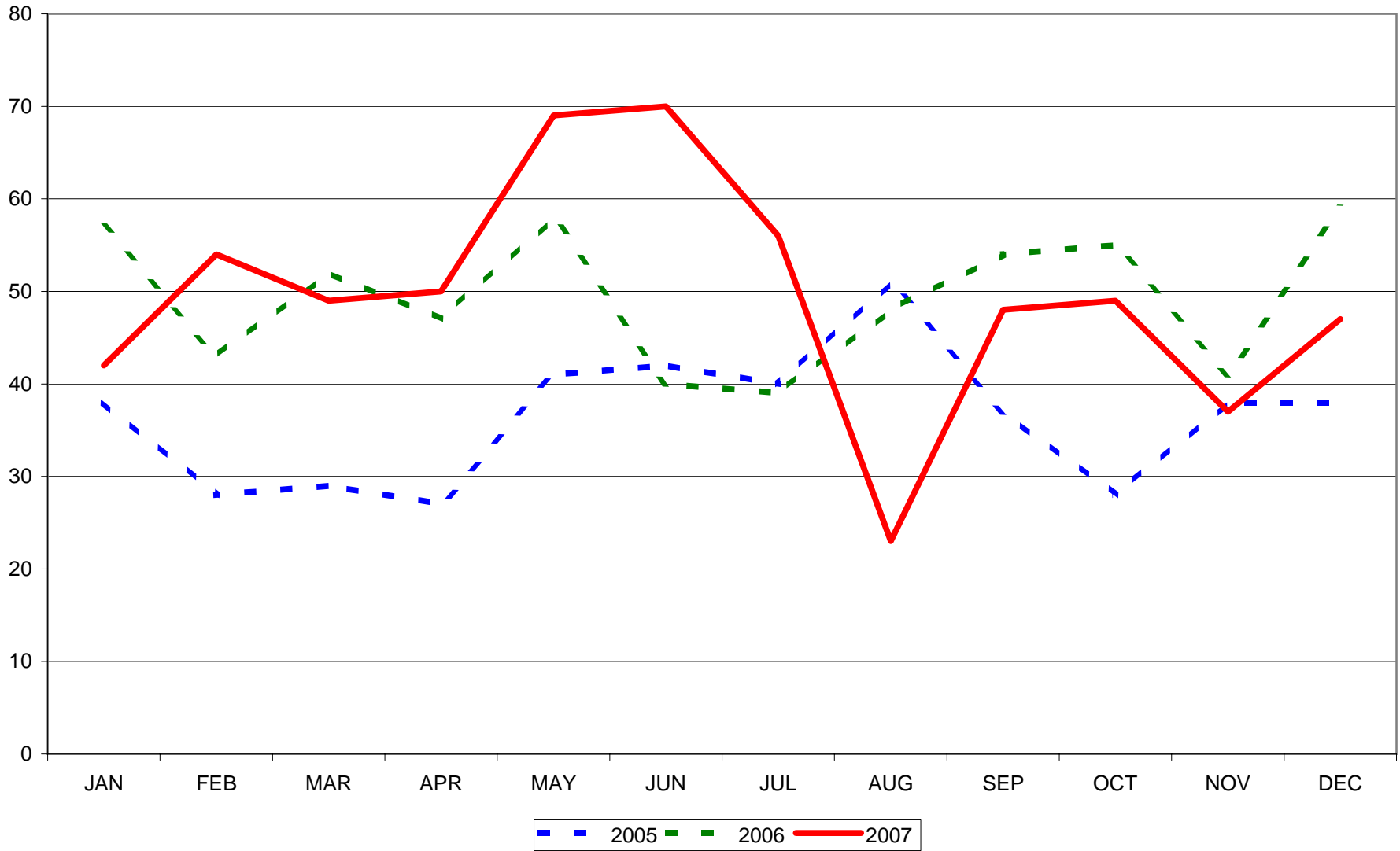
1993 - 2007 Index Crime Trend



2005 - 2007 MONTHLY UCR TRENDS



2005 - 2007 MONTHLY VIOLENT CRIMES TRENDS



2005 - 2007 MONTHLY PROPERTY CRIMES TRENDS

