

**CITY OF LAKELAND
EVALUATION & APPRAISAL REPORT
DEADLINE FOR ADOPTION: OCTOBER
2009**

What is an EAR?

An Evaluation and Appraisal Report is just that, it is a report that evaluates how the City (all sectors, all departments, the public and partner agencies) is doing in terms of implementing long term growth management objectives and policies. It asks how the City's Comprehensive Plan: 2000-2010, has been implemented, what are the major issues for the City today and for the next ten years, and what else needs changing due to new laws or new priorities?



Why do we do an EAR?

The EAR is an opportunity to build data and analysis, public input and recommendations for change that will form the basis of the City's next ten year growth plan, essentially, the Comprehensive Plan for 2010-2020, and beyond. This is a plan that must include a vision for where we are going, what we need to accomplish to get there, what we need to fund, who we need to coordinate and partner with and how we might evaluate our progress.

Oh yes, and the EAR is required by Florida law in Chapter 163.3101 of Florida Statutes. An EAR is required every 7 or so years. Also, for Lakeland,

our EAR will be reviewed in light of our Certification Program for Comprehensive Planning (Lakeland is one of 5 local governments in the State whose long range comprehensive plan is certified the State Dept. of Community Affairs.)

What are the key steps in the EAR process?

I. Hold a meeting (of course!): *The EAR begins with what is called a "Scoping Meeting". This is a meeting that agencies such as FDOT, FDEP, SWFWMD, Polk County and adjacent municipalities are invited to attend and provide input on what the City might consider as part of its "major issues" within the evaluation report.*



These agencies may also offer important resources in the form of data that can be used in the City's report.

II. Public Outreach: *The City will then establish various public outreach and involvement strategies such as on-line surveys, speaker opportunities, meetings, newsletter information and other means to encourage public input.*



We need resident and stakeholder input as we try to define our "major issues". Outreach efforts will culminate in the fall of 2009 via a proposed partnership with Lakeland Vision and its consultant, ACP, Inc. Lakeland Vision also seeks to update the foundations or objectives and strategies for Lakeland's next 10

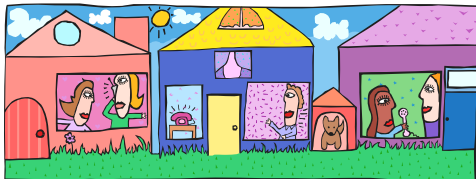
years. Land use scenarios or table exercises are expected to be part of this outreach effort.

III. Collect the Data: Simultaneously City staff will be pursuing updates of key data to review existing conditions and in some cases make new projections (much of the projections will be made during the Plan update though.) This includes conducting an updated Existing Land Use Survey, updating all environmental resource maps/overlay data, producing new draft population projections, updating housing data where feasible, updating transportation and infrastructure data (water and sewer) and so forth. Some sections of the Plan have recently been updated already such as Recreation and Potable Water.



IV. Hold Workshops and Hearings. In the late spring or early summer of 2009 the draft EAR report will be presented to both the City's Planning Board and the City Commission for review and discussion. Following that workshop, a draft of the EAR can be sent to the State for feedback no earlier than July 2009 (90 days). The State will have about 30 days to review and provide feedback. The City must hold an adoption hearing in October, 2009, after which the State reviews the EAR to determine if it is sufficient/meets all criteria.

How and Why Should Residents of the City participate?



Citizens and residents of the City can participate in any of the public meetings, surveys, workshops or hearings held for the EAR. Watch our webpage for further announcements and/or we'll be placing announcements in neighborhood newsletters, discussing our progress with our Citizens Advisory Committee (meets quarterly) and placing ads in the newspaper as needed.

Here's a web link:

<http://www.lakelandgov.net/commdev/planning/comprehensiveplanning.html>

Participation of Lakeland area residents in the EAR process will help the City of Lakeland produce a more meaningful evaluation of not only what we've accomplished to date as a community, but more importantly, what do we want to accomplish for the future?

- **What should our City look like in 10 or more years?**
- **What kind of City services will be important?**
- **What are appropriate policies for an urban growth strategy that seeks a sustainable mix of land uses and maximizes resources available to meet demands of growth while conserving things like open space, water, enhancing parks, transit services and connectivity?**



YOU DECIDE - participate now to help create our future as a community.

