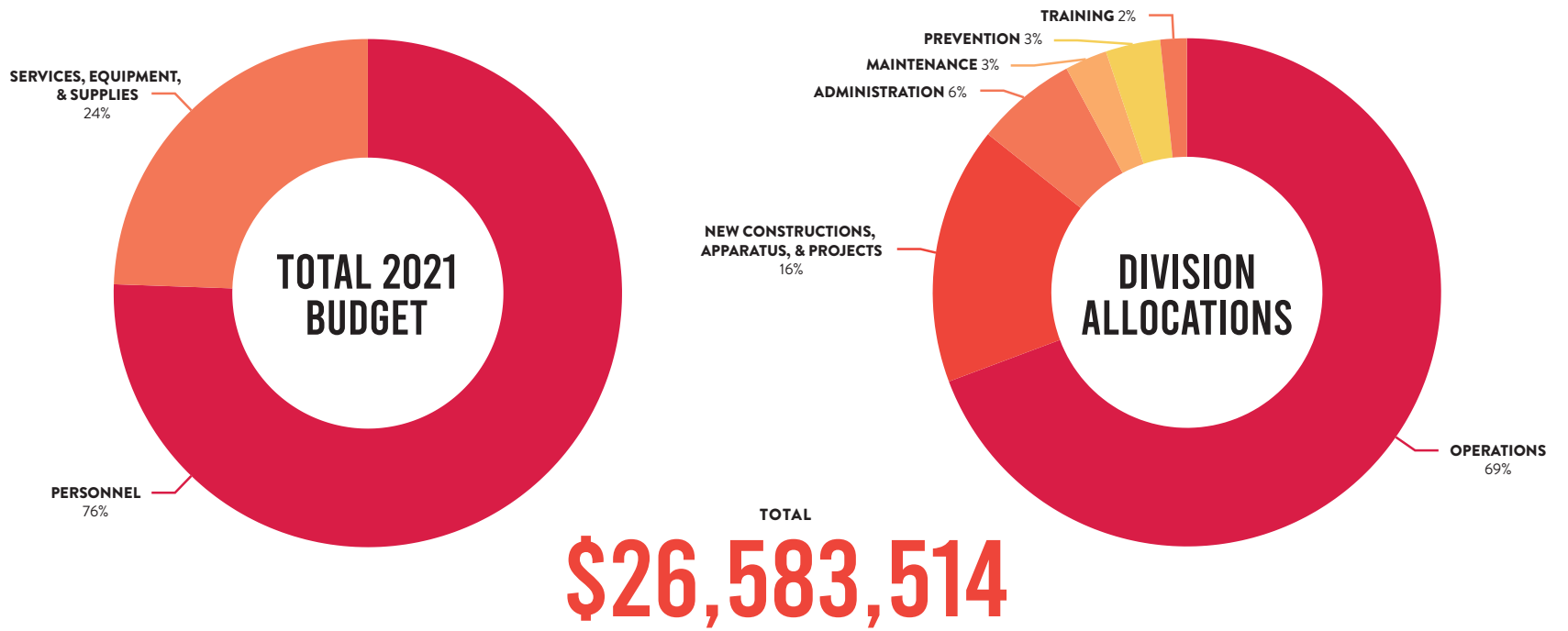


ABOUT US

Established in **1916**, the Lakeland Fire Department is dedicated to being the best public safety organization focused on provided superior customer service. LFD has a rich service history for approximately **112,000+** residents in the City of Lakeland. The department responds to more than **30,000**

service calls annually in its **84** square-mile response area. LFD is rated as an ISO 1 Department with **188** employees, **7** fire stations, an administration building, training center, and vehicle maintenance facility.

BUDGET BREAKDOWN



LAKELAND FIRE DEPARTMENT 2021 YEAR IN REVIEW



LAKELAND FIRE DEPARTMENT

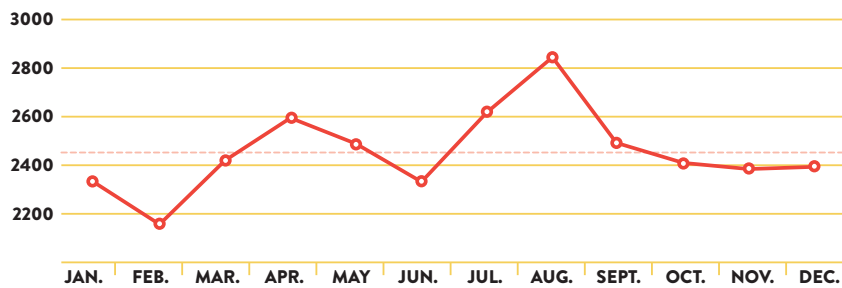
2021

BY THE NUMBERS

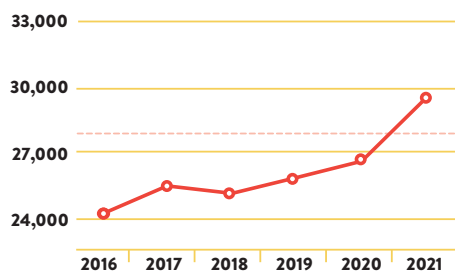
BY APPARATUS

ENGINE 11	1,220
ENGINE 12	1,214
ENGINE 21	1,723
ENGINE 31	1,888
ENGINE 41	1,370
ENGINE 51	2,252
ENGINE 61	1,512
ENGINE 71	1,282
RESCUE 1	3,887
RESCUE 22	3,400
RESCUE 32	3,467
RESCUE 33	3,321
RESCUE 42	2,945
RESCUE 62	2,949
BATTALION CHIEF 1	933
BATTALION CHIEF 2	1,030
RESCUE CAPTAIN	573
TOWER 15	523
HEAVY RESCUE 73	462
OTHER ARFF (ARFF1 & ARFF2) ATV (ALL) BOAT	136

BY MONTH

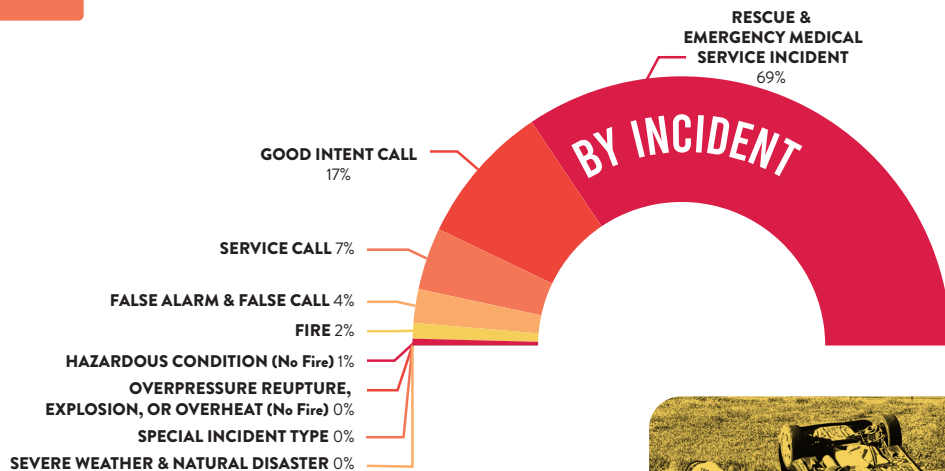
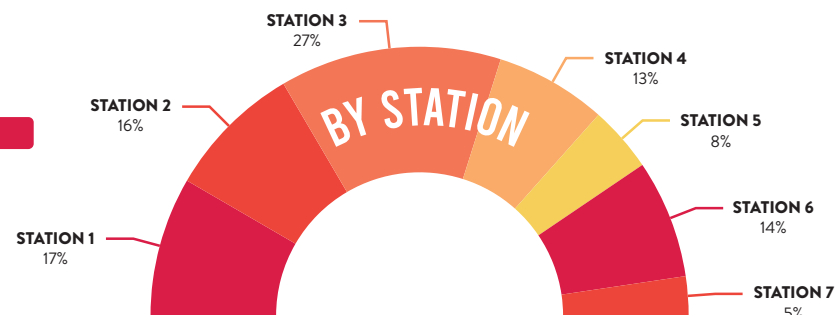
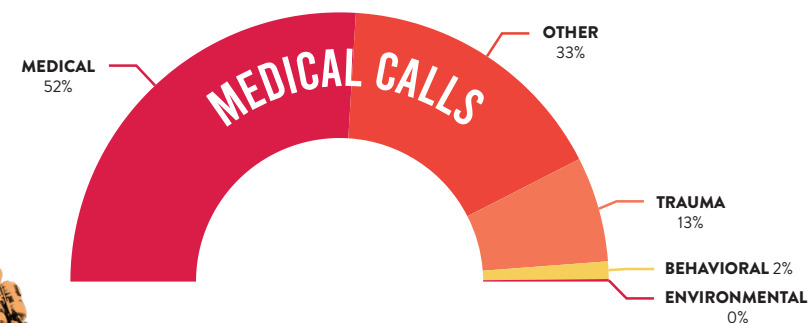


BY YEAR



29,530

TOTAL CALLS FOR SERVICE



PREVENTION

PERMIT RELATED INSPECTIONS PERFORMED

1,959

ROUTINE INSPECTIONS/ RE-INSPECTIONS

1,865

PLANS REVIEWED

1,829

SQ FT OF COMMERCIAL SPACE COVERED

36,652,638