

Notes:

Holes are provided for:

Distribution:

- Post Insulator, Vertical Config. on Brackets
- Strain (Deadend) Insulators
- Crossarm Takeoff
- Single Phase Transformer
- Lightning Arrestor Brackets
- Capacitor Bank

Spacings:

- Distribution, Phase to Phase, 5-ft
- Distribution to Neutral, 6-ft

Embedment:

HD poles embedded 10% + 7-ft

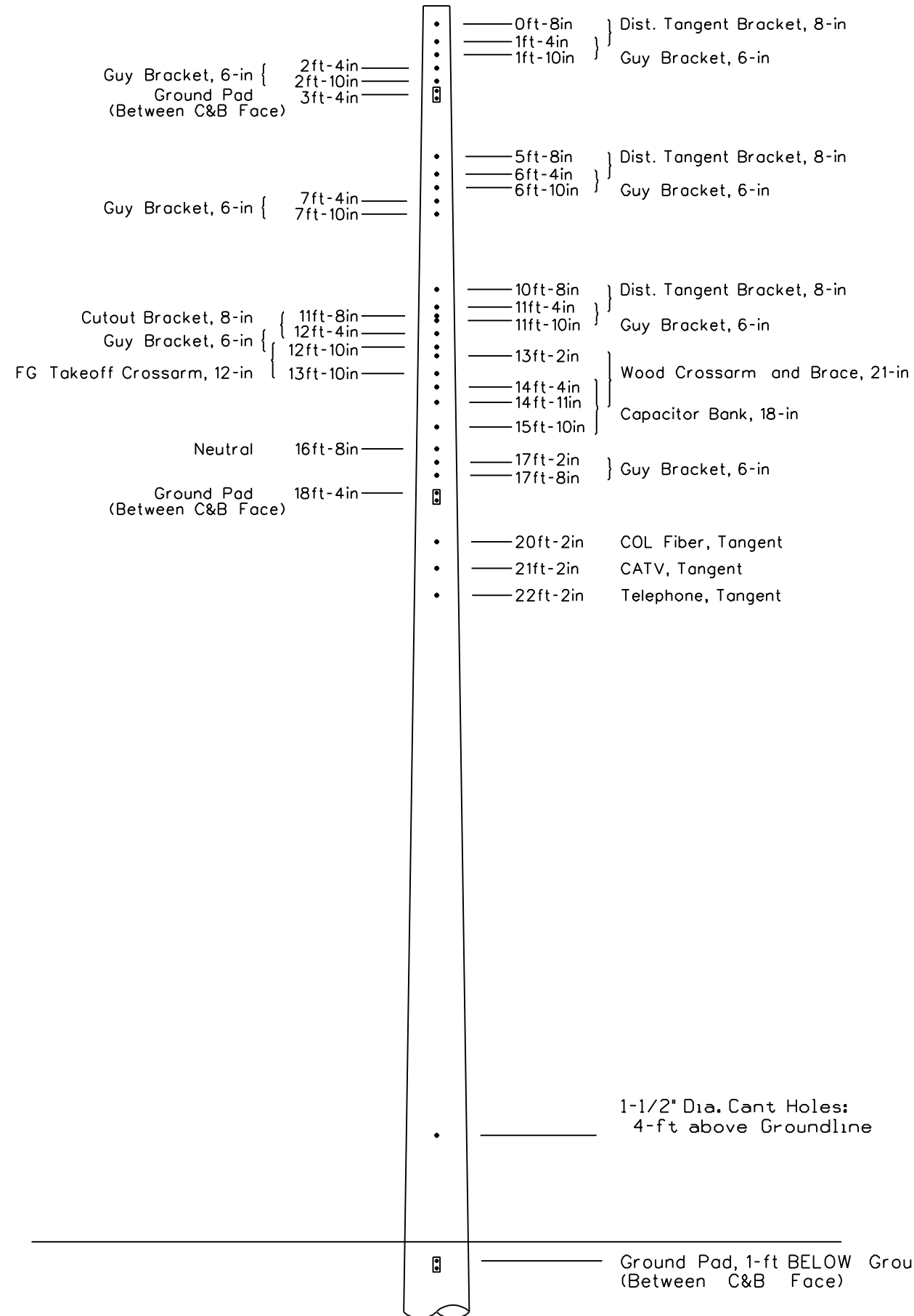
Holes:

All holes shall be 13/16-in diameter unless otherwise noted.

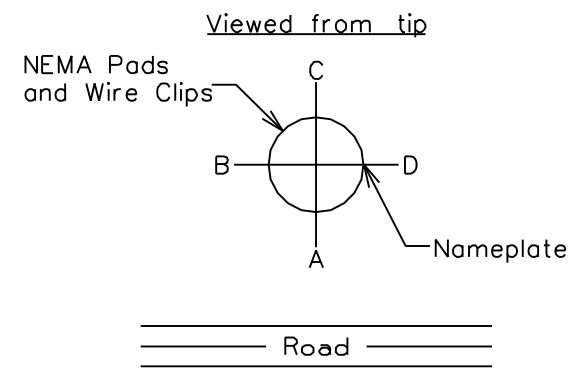
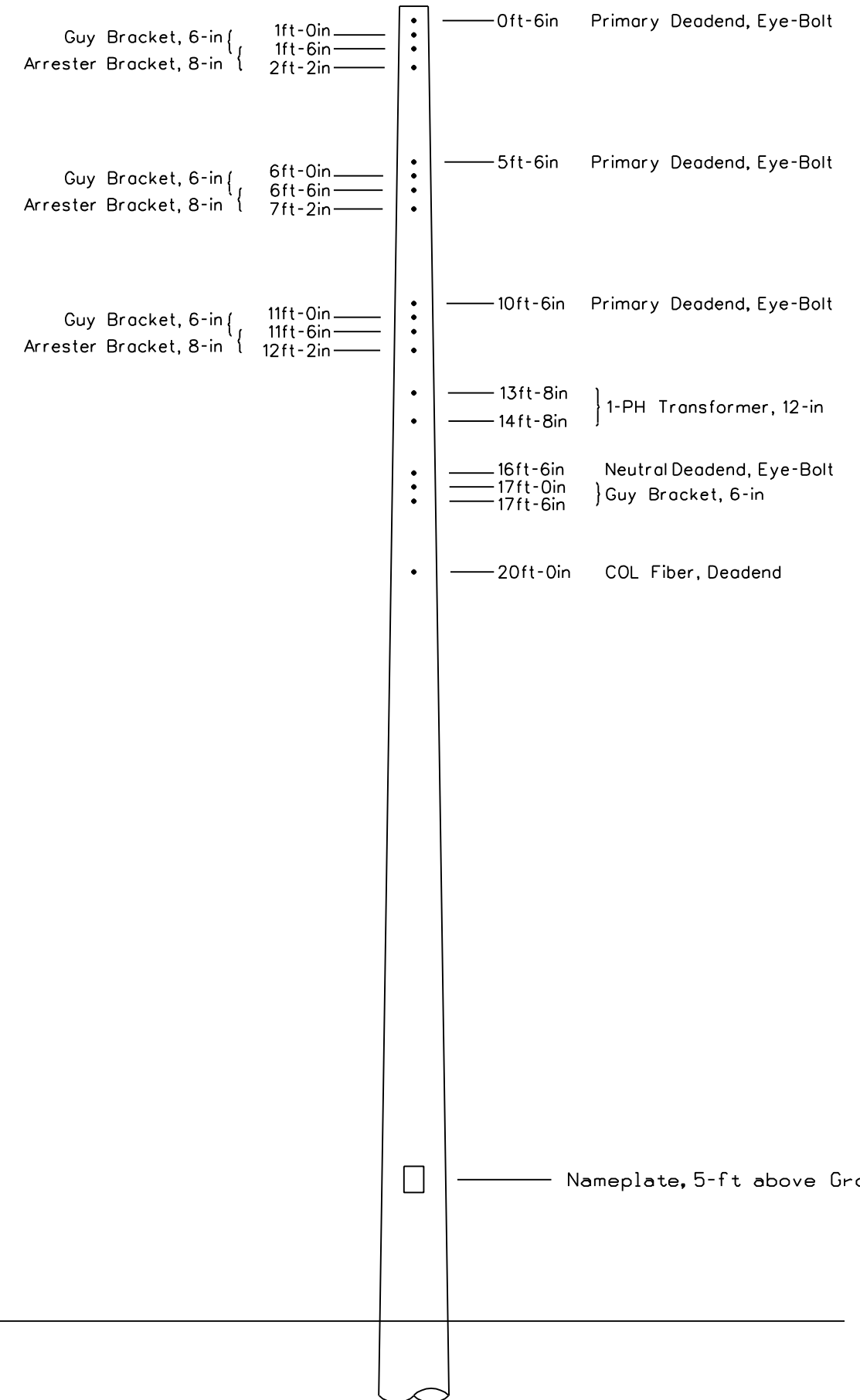
Physical Properties:

Pole Type	Pole Strength Ultimate	Pole Strength Zero-Tension
50HD	6.6-kip	2.2-kip
55HD	6.6-kip	2.2-kip
60HD	6.6-kip	2.2-kip
65HD	6.6-kip	2.2-kip

A-C Holes  
Looking toward "A" face



B-D Holes  
Looking toward "D" face



DRAWING:  
HEAVY DUTY A"

1-1/2" Dia. Cant Holes:  
4-ft above Groundline

Nameplate, 5-ft above Ground

Ground Pad, 1-ft BELOW Ground  
(Between C&B Face)

REV. NO.	BY	DATE	APPR.	REVISION	REV. NO.	BY	DATE	APPR.	REVISION
10	DT	1/07/02	DT	Added 65 foot HD	7	BRS	2/06/08	BRS	Updated Hole Patterns for new framing
12	DT	6/1/21	DT	DELETED REMOVABLE BASEPLATE REQUIREMENT	6	DT	3/28/07	DT	Moved Transf holes and minor revisons
11	DT	8/11/14	DT	RENAMED DRAWING AND REMOVED ND POLES	5	BRS	4/28/06	BRS	Updated Drawing to Scale
9	DT	9/20/12	BRS	Added Base Plate note.					
8	DT	1/12/12	BRS	Added 60 ND Pole					

PLOT DATE: 8/11/14  
 DIVISION: EDEN  
 ENGINEER: Solomon  
 DRN. BY: Solomon  
 APPR. BY: Tanner

DRAWING TITLE: Standard Hole Locations Distribution Poles Drawing "HEAVY DUTY A"  
 MAP SECTION: DISTPOLE-HD A.DGN  
 DWG. NO.:  
 SHT.: 1/1  
 REV.: 12  
 SCALE: NTS

D 3/21